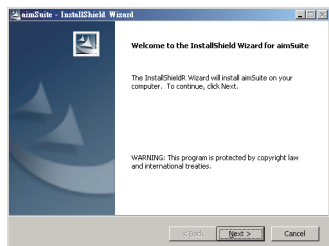


# AS301DTS Quick Guide

www.aimPro21.com V1.0

## 1 Install DTS Headphone Deck

Insert the installation CD into your computer. The following window will pop up. Choose "Next" and follow the rest of the instructions to install DTS Headphone Deck. Restart your system after the installation finishes.



## 2 Using DTS Headphone Deck

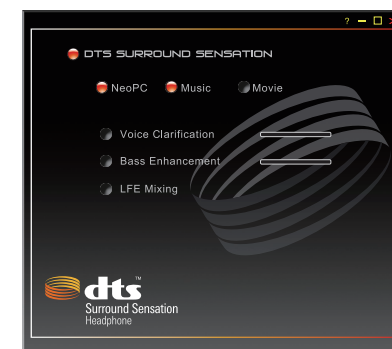
After your system reboots, double click the DTS Headphone icon on desktop to activate dts Headphone Deck.



DTS Headphone Deck enables active DTS surround sensation, creating 5.1 virtual surround sound for you to enjoy music or movies by stereo headphones or speakers.

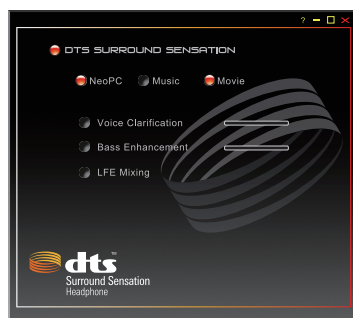
To get more information, please refer to website: <http://www.aimPro21.com>

## 3 DTS Surround Sensation



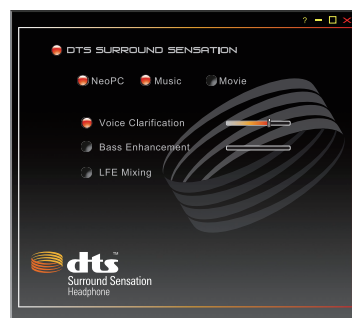
Enable/Disable DTS Surround Sensation. Fine tuning such as Neo PC, Voice Clarification and Bass Enhancement are available.

## 4 Neo PC



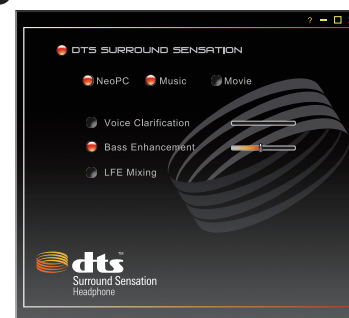
When DTS Surround Sensation is enabled, Neo PC and 5.1 surround sound will be enabled immediately. Specify your audio source.

## 5 Voice Clarification



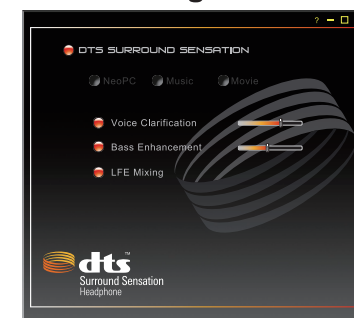
Enable/Disable Voice Clarification. Voice Clarification enhances clarity of input audio. You can select the level of Voice Clarification by sliding the bar to the right for a higher level, or to the left for a lower level.

## 6 Bass Enhancement



Enable/Disable Bass Enhancement. Bass Enhancement improves bass performance and amplifies low frequency tones from what you're playing. You can select the level of Bass Enhancement by sliding the bar to the right for a higher level, or to the left for a lower level.

## 7 LFE Mixing



You can click the circle button to enable LFE Mixing. Low frequency will mix with the front Channels Enhancing bass performance. LFE Mixing will ONLY work if source media is greater than 5.1 audio. This feature is NOT enabled when you play from stereo audio source.

### Known issue with Winamp running on Windows Vista® :

In a playlist, when Winamp player reaches the end of a 2-channel soundtrack and advances automatically to a 5.1-channel soundtrack, the 5.1-channel audio will be automatically downmixed to 2-channel by Windows Vista® before it reaches Surround Sensation. Because Surround Sensation will only be able to process the 2-channel downmixed audio, not the 5.1 discrete audio, the surround effect will not be as dramatic.