

Presenter with RF Wireless Technology

User's Manual



!!! Attention!!!

- *Do not allow minors to use the laser pointer unsupervised. Laser pointers are not toys.*
- *Avoid direct eye exposure.*
- *Never shine the laser pointer at anyone. The laser pointer is designed to illustrate inanimate objects.*
- *Do not point the laser pointer at mirror-like surfaces. A reflected beam can act like a direct beam on the eye.*



FCC AND CE RADIATION NORM

FCC

This equipment has been tested and found to comply with limits for a Class B digital device pursuant to Part 15 of Federal Communication Commission (FCC) rules.

CE

This equipment has been tested and found to comply with the limits of the European Council Directive on the approximation of the law of the member states relating to electromagnetic compatibility (89/336/EEC) according to EN 55022 class B.

FCC and CE Compliance Statement

These limits are designed to provide reasonable protection against frequency interface in residential installation. This equipment generates, uses and can radiate radio frequency energy, and if not installed or used in accordance with the instructions, may cause harmful interference to radio communication. However, there is no guarantee that interference will not occur in a television reception, which can be determined by turning the equipment off and on, the user is encouraged to try and correct the interference by one or more of the following measures:

- Reorient or relocate the receiving antenna
- Increase the separation between the equipment and the Receiver
- Connect the equipment into an outlet on a circuit different from that to which the Receiver is connect to



CAUTION!

The Federal Communication Commission warns the user that changes or modifications to the unit not expressly approved by the party responsible for compliance could void the user's authority to operate the equipment.

Table of Contents

Introduction	5
Features	6
Package Contents	7
System Requirements	7
Installation and operation	8
1. Separate Presenter and Receiver	8
2. Install battery	9
3. Install Receiver	9
4. Pairing	10
5. Operation without installing <i>aimMaster LT</i>	10
6. Install CD-ROM	11
7. The <i>aimMASTER LT</i> Settings	17
8. Open your presentation file	19
Function Descriptions	20
Functions in Microsoft® Office	23
Functions in OpenOffice	24
Troubleshooting	25

Introduction

Presenter is more than an ordinary presenter. Its stylish shape makes it more like an art piece to enhance users' use experiences and enjoyments.

RF wireless technology makes Presenter transmit data up to 60 feet (20 meters). Conveniently placed PAGE UP and PAGE DOWN buttons help you page through slides effortlessly.

With its omni-directional feature, you can confidently conduct the business meetings, hold the conferences, and instruct the teaching lessons.

Presentation hotkey is convenient to open prepared PPT/PPS/PDF/OPD/ABW file. Laser pointer helps to catch audience attention.

The useful application software, *aimMaster LT*, supports one button to open files, SWITCH AP, display Timer, etc. Presentation becomes easy, efficient, and pleasant.

We make no representation for the errors, omissions or updates of this document.

Features

1. Innovative design of omni-directional Presenter for performing a perfect presentation
2. Simple pairing design
3. Presentation hotkey allows you to start the prepared PPT/PPS/PDF/OPD/ABW file conveniently
4. Laser pointer with secure design helps you catch audiences' attention and use it safely.
5. Value software, *aimMaster LT*, lets you conduct a presentation easily and efficiently.
6. Use DC 3V power operation: CR 2032 × 1.
7. Receiver with USB Port, easy to connect with your computer

Package Contents

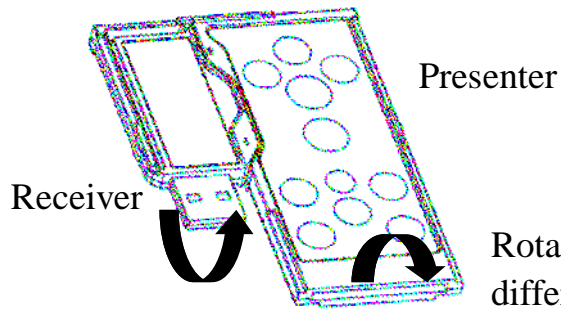
- Presenter
- USB type RF Receiver Dongle
- User's Manual & Value Software, *aimMaster*, in CD-ROM
- CR2032 battery x 1
- Quick Guide

System Requirements

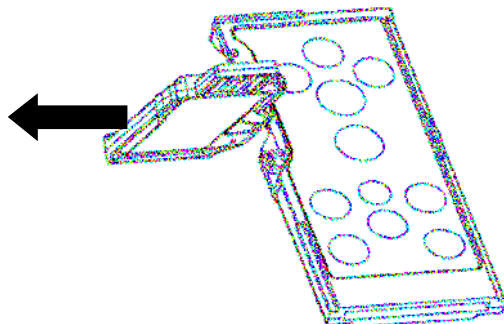
- Intel® Pentium® III/IV PC 800MHz CPU or faster
- 512MB RAM recommended(1G recommended)
- Desktop or laptop computer running Microsoft® Windows® 2000, XP, Vista
- CD-ROM drive or DVD-ROM drive.
- USB Port; PC platform

Installation and operation

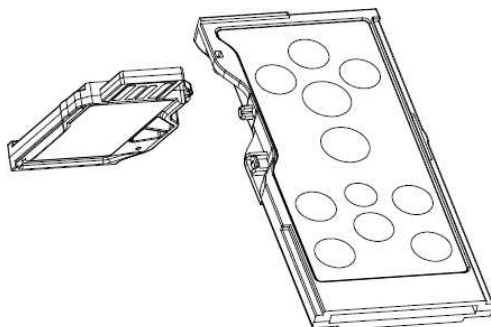
1. Separate Presenter and Receiver



Rotate the Presenter and Receiver to different direction (as the arrow shown).



Pull Receiver away from Presenter.



Separate Presenter and Receiver.

2. **Install battery**

Open the battery cover of Presenter and put in Coin Type Lithium battery (CR2032). When you place the battery in, the positive end should face up.

3. **Install Receiver**



Plug Receiver (with golden pins face up for notebook computer) into the USB port of your computer. If the blue indicator on Receiver does not flash once, unplug Receiver, turn the Receiver upside down and plug in again.

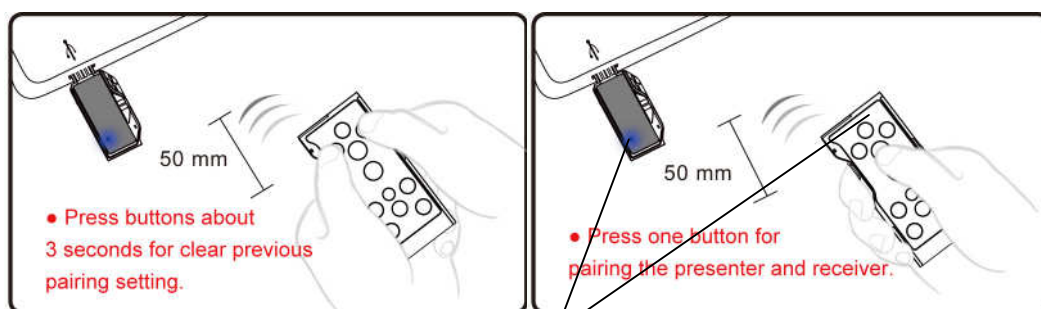


Keep the Presenter close to Receiver (within 5 cm, or 2 inches) and press any button except the LASER button of the Receiver for more than one second. If the Receiver's blue indicator light is blinking, you may start to use the Presenter for presentation. Otherwise, do the following steps to

pair the Presenter and the Receiver:

4. **Pairing**







- A. Press and hold both  and  buttons for 3 seconds until the blue indicator on the Presenter flashes. Release both buttons.
- B. Put your Presenter close to the Receiver within 5 cm (2 inches) and
- C. Press and hold any button except LASER button of the Presenter for 1~3 seconds. The blue indicators on both the Presenter and the Receiver will be on for 1 second if the pairing is successful. Release the button.
- D. The blue indicator of Receiver blinks when the Presenter keys (except the LASER button) are pressed.



Blue indicators

5. **Operation without installing *aimMaster LT***

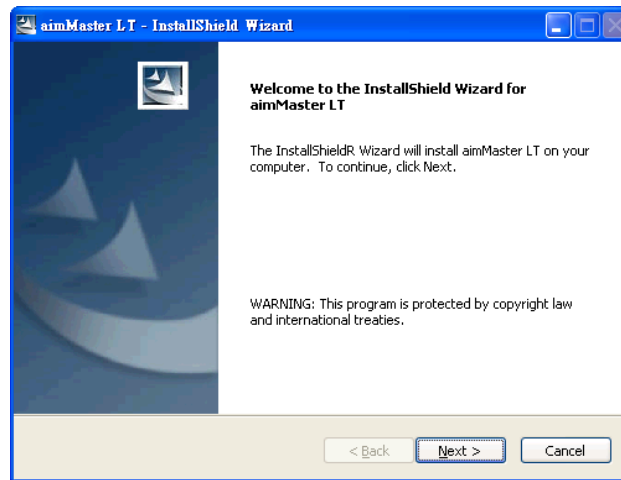
Without running the software, *aimMaster LT*, after plugging Receiver to the USB port of your computer, the following six buttons can be used:

-  PAGE UP
-  PAGE DOWN
-  Start Presentation/Black Screen (See Function Descriptions, PLAY POWER POINT, p.20)
-  TAB
-  SHUT DOWN
-  LASER POINTER

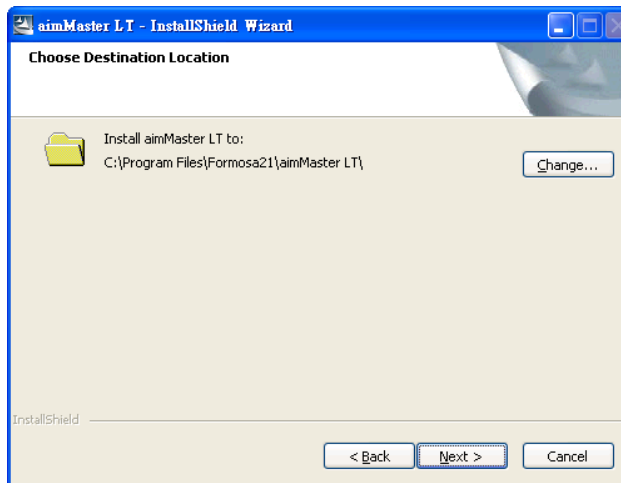
6. **Install CD-ROM**

Insert the CD-ROM to your computer. The installation of the software, *aimMaster LT*, will start automatically.

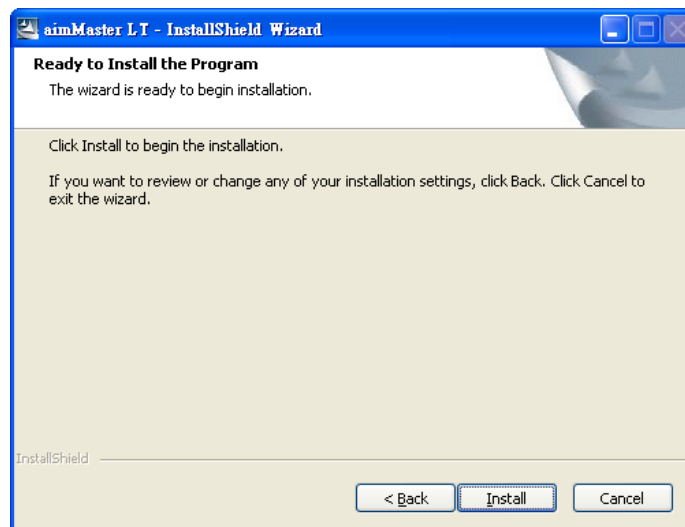
【XP Installation】



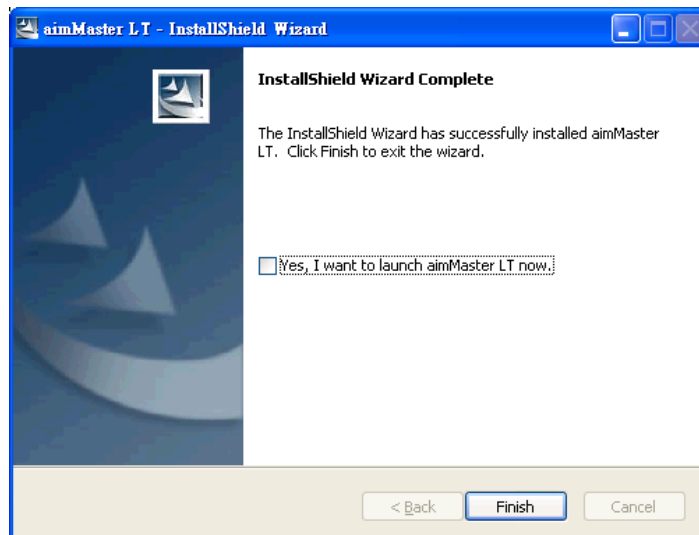
Press Next.



Press Next.



Press Install.

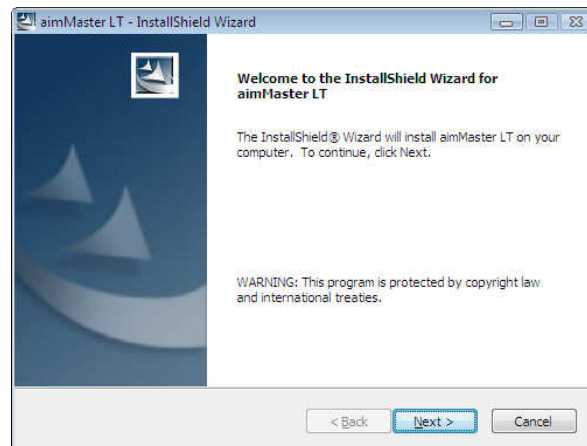


Press Finish.

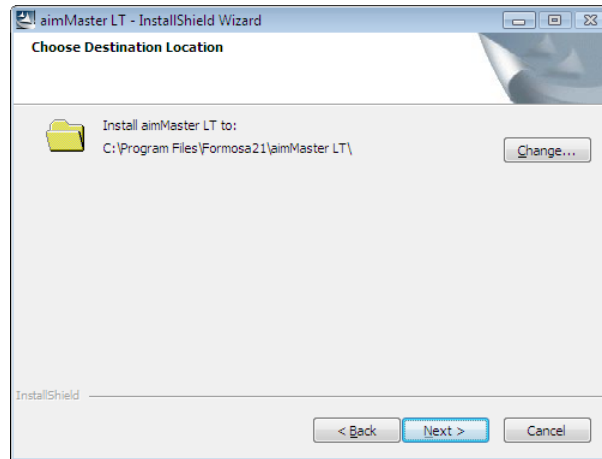
【Vista Installation】



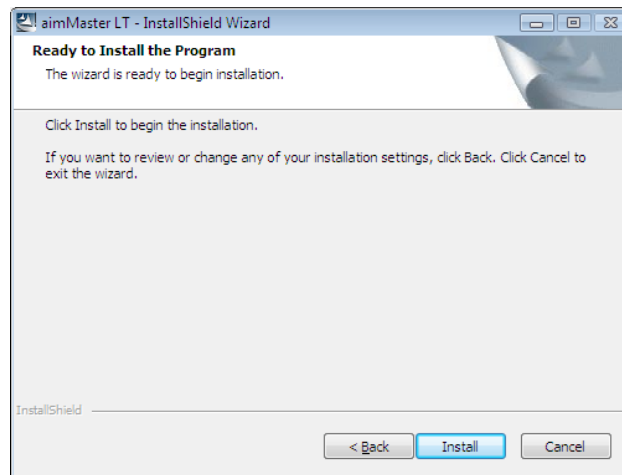
Press Run setup.exe.



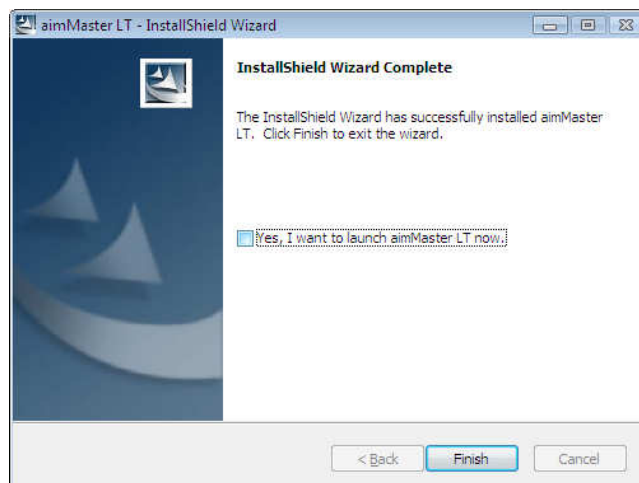
Press Next.






Press Next.




Press Install.

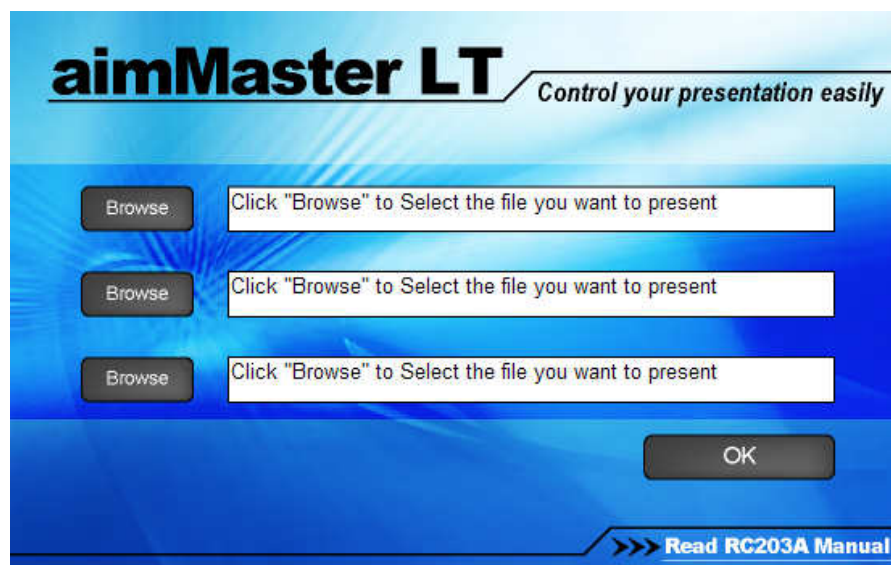


Press Finish.

After installation, the icon of *aimMaster LT* will appear on the System Tray of Windows by default setting. When USB dongle is plugged-in, it shows icon  with green spot. Otherwise, it shows icon  with red cross. Always execute Launch Manger first before you use Presenter to do your presentation. If you want to cancel the autorun setting of *aimMaster LT* when Windows startup, please right-click the *aimMaster LT* icon  on system tray and unselect “Autorun on startup”.

7. The *aimMaster LT* Settings

- 7-1** Open *aimMaster LT* editor by double clicking the icon of *aimMaster LT*  on the system tray, the following window will pop up. Click “Browse” button to choose the file that you want to present (3 files at most), and then press OK button. You may click “Clear” button to reset the file linked previously.



7-2 Right-click the icon  of *aimMaster*

LT on the System Tray. You can select one of the functions:

A. *Open Editor*

To open the windows to input the paths of up to 3 files for presentation as described above.



B. *Autorun on startup*

Select this setting will enable *aimMaster LT* when you reboot your computer so that you can use full *aimMaster LT* functions during the presentation.

C. *Enable Timer*

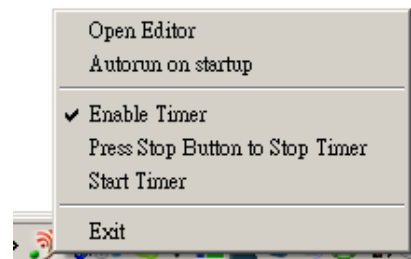
Select this setting will allow you to use the timer function so that you know how much time you spend in the presentation. If Timer Enable is selected, two more functions could be selected:

● *Press STOP button to stop Timer*

When this setting is selected, pressing STOP button  will stop the timer. Otherwise, when you press STOP button , the timer is still running.

● *Start Timer or Stop Timer*

When the timer is not running, this setting becomes “Start Timer”, clicking this setting will start the timer. The screen




shows a running timer on the up-right edge of the screen. Otherwise, this setting becomes “Stop Timer” and clicking this setting will stop the timer.







8. Open your presentation file(s)











Pressing OPEN FILE button  to open the file(s) which you have entered the path(s) in the Open Editor window.







E.g., if you have entered the paths of 3 files in the Open Editor, pressing

OPEN FILE button  once will open these 3 files simultaneously.












Function Descriptions

Icon	Button	Remark	= Keyboard
	LASER POINTER	Laser is locked as default for secure consideration. When you press and hold the LASER POINTER button  for 3 seconds, laser is unlocked. It is locked when the idle time is longer than 30 minutes.	N/A
	OPEN FILE	A. When the selected file(s) is (are) not opened yet, it will open the selected file(s). B. In the Power Point full-screen mode, pressing it will leave the full-screen mode C. If the Power Point file is the active window and it is not in full-screen mode, pressing it will close this file.	N/A
	PLAY POWER POINT	Pressing this button in all applications will start the timer. For the Power Point file, A. If it is not in full-screen mode, pressing this button  once will enter the full-screen mode. B. If it is in full-screen mode, pressing and holding this button  for 3 seconds	F5 or B





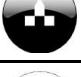






		<p>will black the screen. Press PAGE UP or PAGE DOWN to restore the screen.</p> <p><i>Note:</i> <i>If the PPT version is later than 2003, it will full-screen the selected page. Otherwise, the full-screen page is the first page.</i></p>	
	TIMER	<p>Right click the icon  on the System Tray, select Start Timer, the timer will start to count up and displays on the upper-right edge of the screen. Pressing PLAY POWER POINT button  once also can start the timer. You can click TIMER button  to hide it and click this button  again to display it.</p>	N/A
	PAGE UP	Move forward page.	Pg UP
	PAGE DOWN	Move backward page	Pg DN
	TAB	<p>It works in the Power Point file. When you insert audio, video or website link. Press TAB button  to select the inserted file and then press  to play it.</p>	Tab

	PLAY/PAUSE	<ol style="list-style-type: none"> 1. It can play or pause a media file when the active window is Media Player. 2. It's an OK key when the active window is Power Point or when you use SWITCH AP button  to switch to different application. 	Ctrl + P
	STOP	Stop the media file.	Ctrl + S
	SWITCH AP	<p>It can switch the current application to the other that is opened already. Click PLAY/PAUSE button  to go to the application you selected.</p>	Alt + Tab
	SHUT DOWN	<ol style="list-style-type: none"> 1. Shut down the current application. 2. Shut down the timer 	Alt + F4





Functions in Microsoft® Office

Items	Icon	Key	Word	Excel	PowerPoint
1		LASER POINTER	Laser pointer	Laser pointer	Laser pointer
2		OPEN FILE	Open the selected file	Open the selected file	Open the selected file
3		PLAY POWER POINT	No full-screen mode	No full-screen mode	Play Power Point
4		TIMER	Timer	Timer	Timer
5		PAGE UP	Page up	Page up	Page up
6		PAGE DOWN	Page down	Page down	Page down
7		TAB	Input tab	Select grid	Select item
8		PLAY/PAUSE	Input enter	Input enter	Input enter
9		STOP	–	–	–
10		SWITCH AP	Switch AP	Switch AP	Switch AP
11		SHUT DOWN	Shut down	Shut down	Shut down

Functions in OpenOffice

Items	Icon	Key	Writer	Calc	Impress
1		LASER POINTER	Laser pointer	Laser pointer	Laser pointer
2		Start PowerPoint	Open the selected file	Open the selected file	Open the selected file
3		PLAY POWER POINT	No full-screen mode	No full-screen mode	Play Impress
4		TIMER	Timer	Timer	Timer
5		PAGE UP	Page up	Page up	Page up
6		PAGE DOWN	Page down	Page down	Page down
7		TAB	Input tab	Select grid	Select item
8		PLAY/PAUSE	Input enter	Input enter	Input enter
9		STOP	–	–	–
10		SWITCH AP	Switch AP	Switch AP	Switch AP
11		SHUT DOWM	Shut down	Shut down	Shut down

Troubleshooting

Question	Analysis	Solution
The Presenter doesn't work.	<ul style="list-style-type: none"> ● No battery, battery died, or incorrect battery installation. ● The pairing failed. ● Incorrect Presenter installation. 	<ul style="list-style-type: none"> ● Check Presenter battery and its installation (refer to p.9). (The rechargeable battery is NOT acceptable) ● Follow the section 4 (p.10), "Pairing in Installation and Operation". ● The Receiver is plugged into computer USB port in wrong direction. Unplug the Receiver and plug it into the USB port to the upside down direction. If the Receiver is plugged into the USB port of the computer correctly, the blue indicator of the Receiver should blink once.
Not all the Presenter buttons are functional. The PLAY POWER POINT button  is not working.	<ul style="list-style-type: none"> ● The application software, <i>aimMaster LT</i>, isn't active and in System tray, there is no  icon. 	<ul style="list-style-type: none"> ● If <i>aimMaster LT</i> is not installed yet, follow section 6 (p. 11), "Install CD-ROM" to install it. Otherwise, double click the <i>aimMaster LT</i> icon on desktop of your computer to activate it.
Pressing the PLAY POWER POINT button  does not start the timer.	<ul style="list-style-type: none"> ● The timer is not enabled 	<ul style="list-style-type: none"> ● Right click the aimMaster LT icon on the System Tray, and left click the "Enable Timer" setting. Then pressing the PLAY POWER POINT button  should start the timer.

Notice:

1. Please activate the software, *aimMaster LT*, before using Presenter.
2. Please do not use rechargeable batteries on this product.